

# GL360:

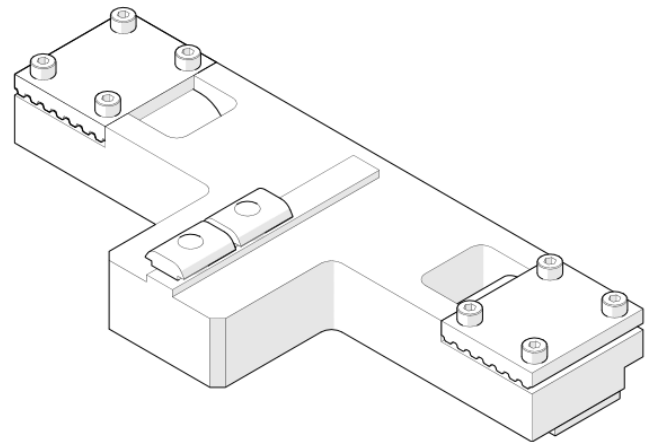
## The Grip Kit

### The Kit:

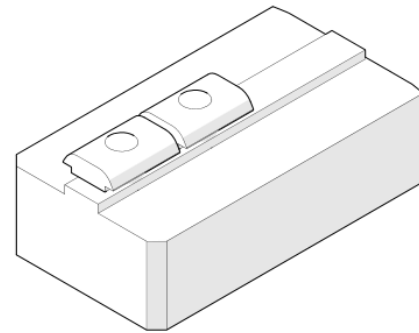
The Glide-Line 360 Kit can transform a standard conveyor into a belted linear actuator. The kit makes multiple accurate axis of control possible, by benefiting from several important design features of the Glide-Line conveyor. This includes features such as 192 degrees of belt wrap around the drive sprocket, zero backlash drive pulley design, and steel reinforced tension members in all belts preventing stretch.

The Grip Kit can connect two loose ends of belt through a twin clamp system that directly interfaces with the tooth side of the belt. The kit can bolt up to any standard Glide-Line T-Slot, allowing flexibility in mounting to the bottom or side of a conveyor, or mounting to any aluminum extrusion series featuring a 10mm T-Slot.

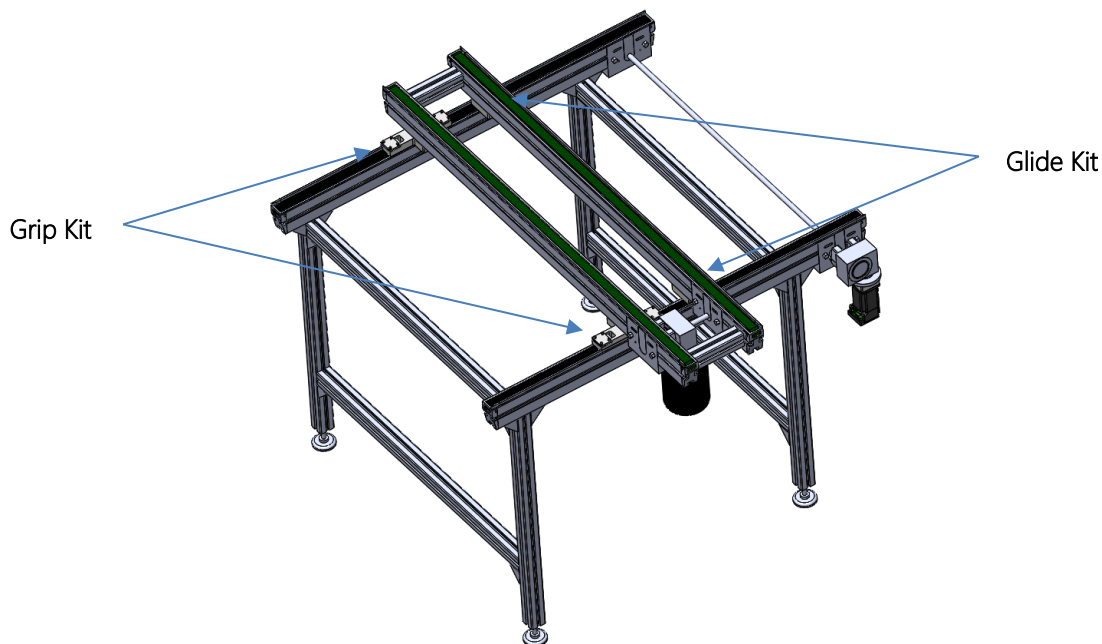
The Glide Kit allows for supported sections of the moving assembly to be supported by the actuator conveyor, without cutting and splicing the belt. An ideal configuration would include two Grip Kits and two Glide kits as pictured below.



Grip Kit Part Number: A-00053



Glide Kit Part Number: A-00054

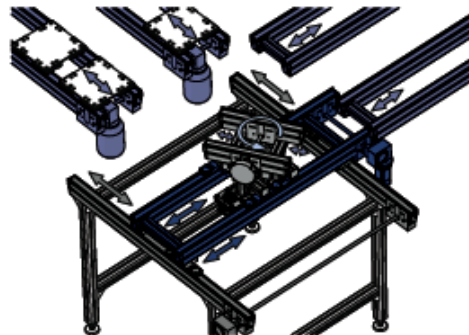


### Application Examples



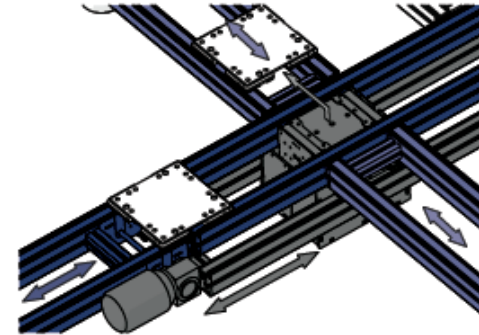
#### *Pallet Shuttle*

The pallet shuttle allows traffic to be merged or sorted. For example, pallets can be merged from three lanes into one lane, or they can be sorted from one lane into three.



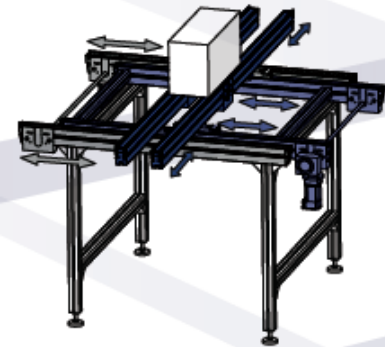
#### *Pallet Rotate & Shuttle*

The rotate & shuttle allows a pallet to be moved from location to another while at the same time manipulating the orientation of the pallet.



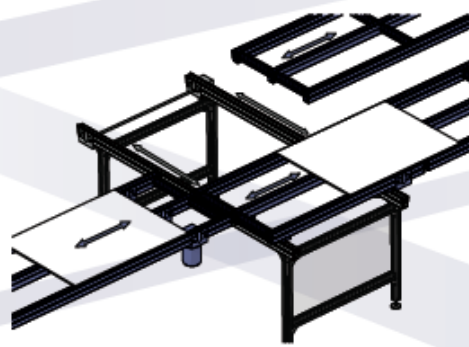
#### *Lift Transfer Shuttle*

This solution has a small lift and transfer conveyor running the length of a trunk line. It can accept product at one or more location and drop off at multiple locations along the same trunk.



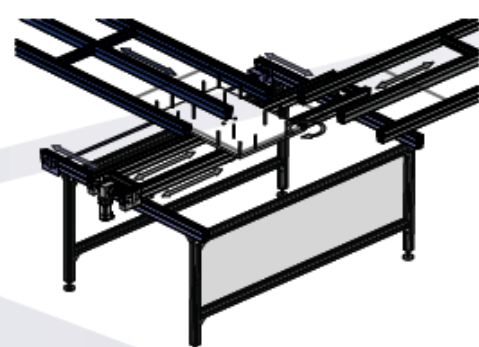
#### *Adjustable Width, Single Side or Centerline Adjust*

By utilizing 360 on independent conveyor strands, we can automatically adjust the width between strands as the application demands. This can be done on one or both strands.



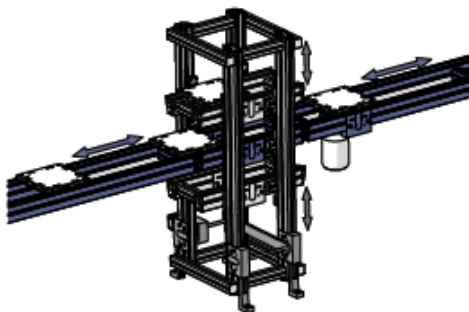
#### *Panel Shuttle*

This solution makes a section of conveyor mobile in a single axis so that panels can be received one or more conveyor lanes and distribute to other lanes.



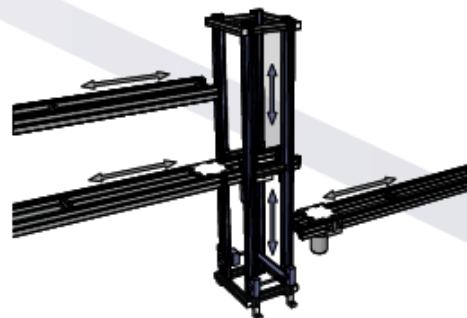
#### *Panel Rotate & Shuttle*

The rotate & shuttle allows a panel to be moved from location to another while at the same time manipulating the orientation of the panel.



#### *Buffer*

A VTU base unit can be used to create multiple levels of conveyors or shelves for uses as a buffer system.



#### *VTU (Vertical Transfer Unit)*

The VTU aids in transfer versatility from one line to another line above or below (aka "over/under").