

mVTU:

The Mini-Vertical Transport Unit

The Device:

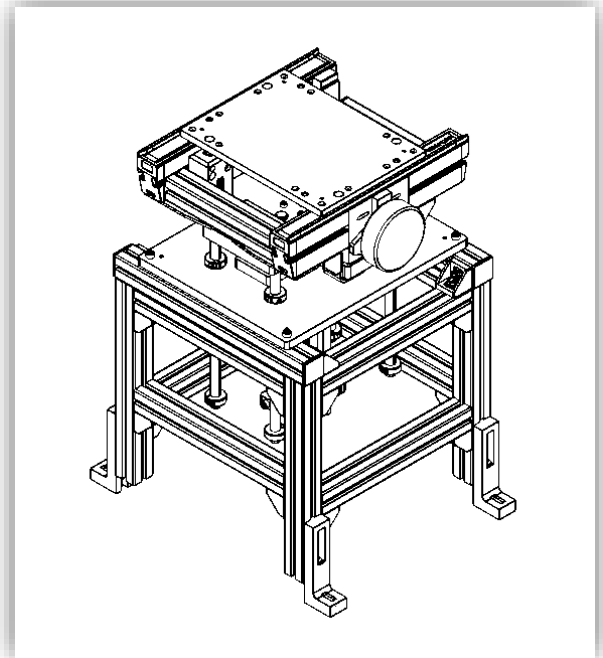
The Mini-Vertical Transport Unit (mVTU) offers a more cost-effective solution to application configurations requiring an Over/Under loop. The vertical movement is accomplished with a pneumatic cylinder actuating to a standard of 2 positions or locations within device stroke limitations.

The unit comes standard with a conveyor transport deck powered by a 24VDC pancake motor with a DC Motor controller, a 250mm stroke, and a pedestal mount. Anything greater than a 250mm stroke is available upon special request and requires additional engineering. Guarding is available as an option, but not a standard configuration. Powering transport deck with AC motor is available upon evaluation of overall weight distribution by a Glide-Line Application Engineer.

Each unit also includes a sensor mount bracket with an optional sensor to detect stroke of pneumatic cylinder (see more information below for sensor options).

Basic Order of Operation:

1. Pallet is conveyed to device
2. Pallet is stopped directly over device by stop, or locating device (not included)
3. Lift actuates to transfer position at end of stroke
4. Pallet is conveyed off of device onto nearby conveyor
5. Lift deactivates and lowers and returns to original position to accept next pallet



Part Number: mVTU-(A)-(B)-(C)-(D)-(E)

- A** = Pallet Width
- B** = Length of transport deck conveyor in mm
- C** = Distance of motor package from end of conveyor in mm. Can also take the value of **L** for Left, **R** for Right, or **C** for centered, **CL** for centered left, or **CR** for centered right
- D** = Belt Type on transport deck, **S** for Standard polyamide cover green belts, **A** for Antistatic black belts, **P** for no cover polyurethane white belts
- E** = Motor/Gearbox Combination Code

Technical Specifications:

Lift range: up to 250mm**

Lift cylinder bore: 40mm

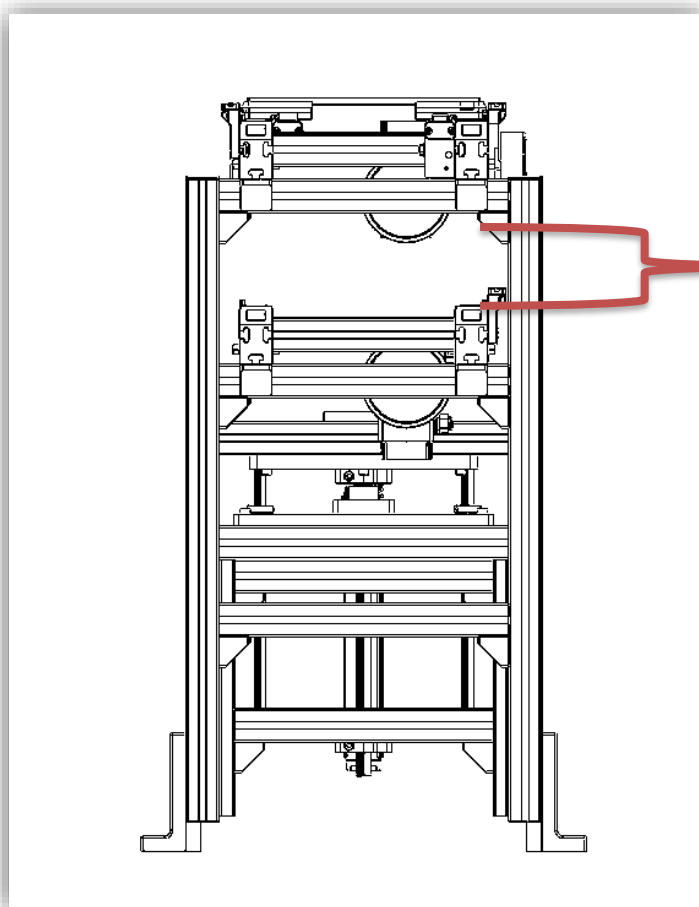
**Lift capacity (incl. deck CV and pallet): 150 Lbs. @ 80 psi.

**Standard Pallet length range: 160mm to 400mm in 1mm increments

**Standard Pallet width range: 160mm to 400mm in 1mm increments

Pneumatic Ports: ¼ NPT

custom options available outside these ranges/values specified above upon require verification from engineering



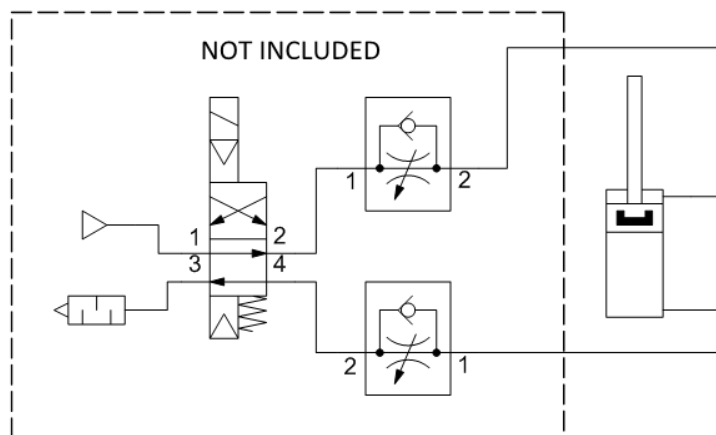
102mm

Clearance between upper and lower level of mVTU Over/Under:

The image to the left identifies the clearance available for a pallet to operate on the lower level of an Over/Under Loop with mVTUs as 102mm.

Recommended Pneumatic Schematic:

*Fittings and Valves not included



Recommended Sensor Brackets:

10" stroke cylinder use bracket P-01031

Recommended Sensor Package:

IFS298 (P-00911) – Inductive sensor K1, 12mm diameter, 8mm nonflush range, 3wire DC PNP, N.O, QD
 IFM EVC004 (P-00910) – IFM electronic, cordset, M12 Female R/A, 4 Wire, 5 Pin, 2m, PUR, Black