

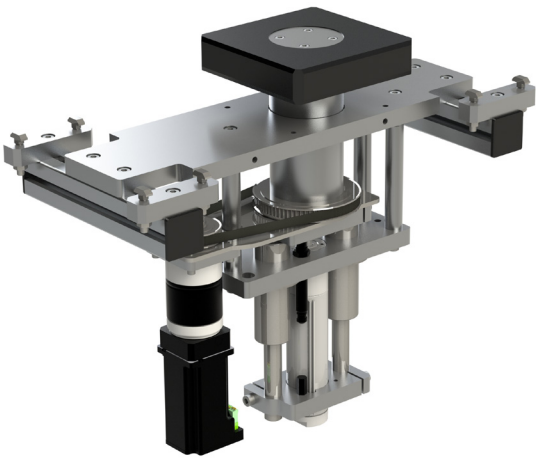
Lift and Rotate Unit

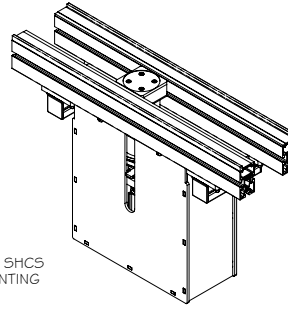
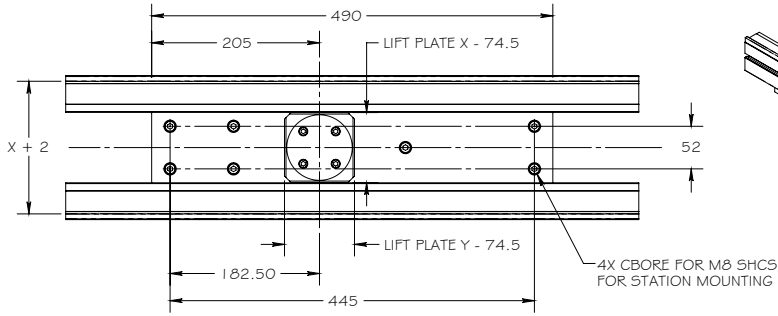
Features

- Pneumatic lift.
- Servo driven rotation.
- Integrated shock absorbers for lift motion.

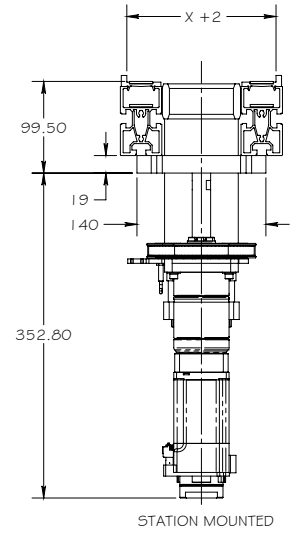
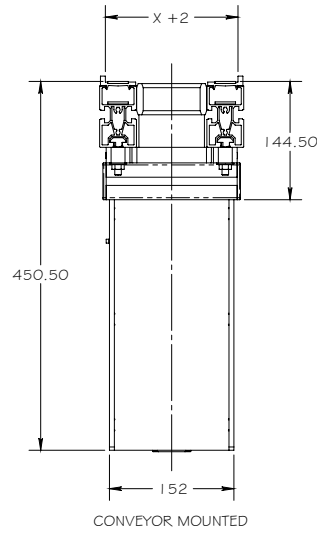
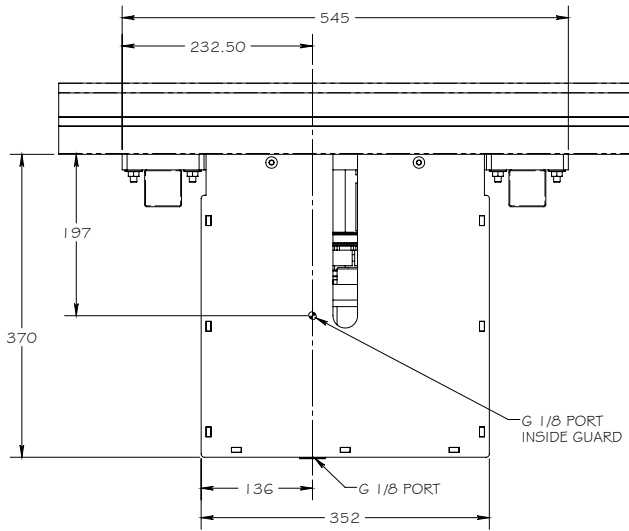
Specifications

- Bi-directional operation.
- Payload capacity - 150 Lbs. @ 80 psi.
- Pallet length range - 160mm to 1040mm in 1mm increments.
- Pallet width range - 160mm to 1040mm in 1mm increments.
- 40mm bore lift cylinder.
- 75mm lift stroke.





GLIDE-LINE STANDARD LIFT AND ROTATE UNIT
 X = NOMINAL PALLET WIDTH
 Y = NOMINAL PALLET LENGTH
 CYLINDER BORE = 44.8mm
 G 1/8 PORTS
 MAGNETIC PISTON
 POSITION SENSOR RAILS
 HYDRAULIC SHOCK ABSORBER TO DAMPEN LIFT
 OPTIONAL GUARD
 CAN BE CONVEYOR OR STATION MOUNTED
 MIN. PALLET SIZE 160 X 160
 MAX. PALLET SIZE - 1040 X 1040



Glide-Line™
 255 Schoolhouse Road
 Souderton, Pennsylvania 18964

Phone: 215-721-1900
 Fax: 215-721-0633
www.glide-line.com