

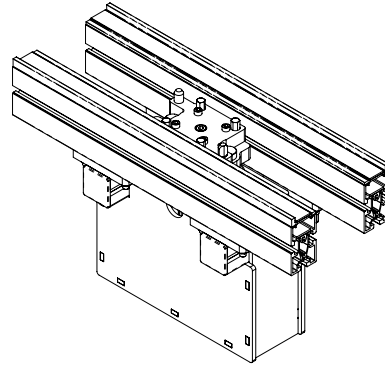
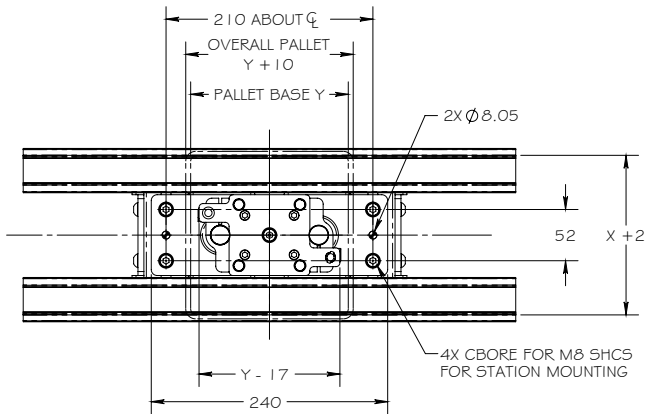
## Standard Lift and Locate Unit (SLLU)

### Features

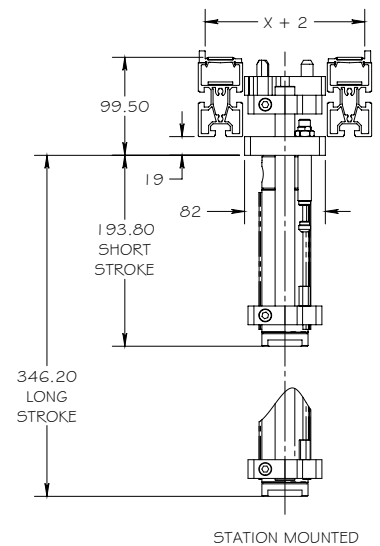
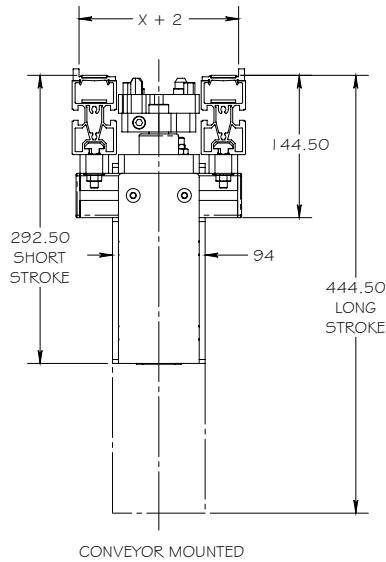
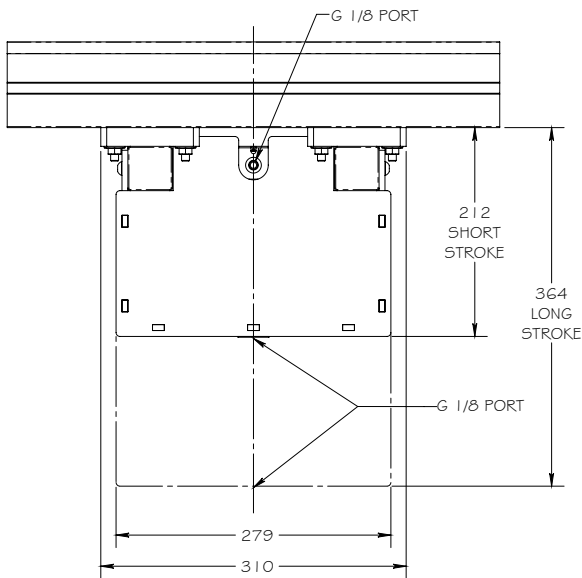
- Pneumatic lift actuation
- Station or conveyor mounted.

### Specifications

- Hydraulic shock absorbers for vertical motion.
- Lift range 500mm to 200mm.
- Precision lift height adjustment  $\pm 10$ mm
- Lateral and vertical location repeatability within .05mm.
- 40mm bore lift cylinder.
- Lift capacity – 150 Lbs. @ 80 psi.
- Pallet length range – 160mm to 1040mm in 1mm increments.
- Pallet width range – 160mm to 1040mm in 1mm increments.



GLIDE-LINE STANDARD LIFT AND LOCATE UNIT  
 X = NOMINAL PALLET WIDTH  
 Y = NOMINAL PALLET LENGTH  
 CYLINDER BORE = 44.8mm  
 G 1/8 PORTS  
 MAGNETIC PISTON  
 POSITION SENSOR RAILS  
 FULLY ADJUSTABLE LIFT HEIGHT WITHIN MAX. RANGE  
 SHORT STROKE MAX. LIFT 75mm  
 LONG STROKE MAX. LIFT 200mm  
 HYDRAULIC SHOCK ABSORBER TO DAMPEN LIFT  
 OPTIONAL GUARD  
 CAN BE CONVEYOR OR STATION MOUNTED  
 PALLET POSITION REPEATABILITY WITHIN .05mm  
 MIN. PALLET SIZE 160 X 160  
 MAX. PALLET SIZE - 1040 X 1040



**GLIDE-LINE™**

**Glide-Line™**  
 255 Schoolhouse Road  
 Souderton, Pennsylvania 18964

Phone: 215-721-1900  
 Fax: 215-721-0633  
[www.glide-line.com](http://www.glide-line.com)